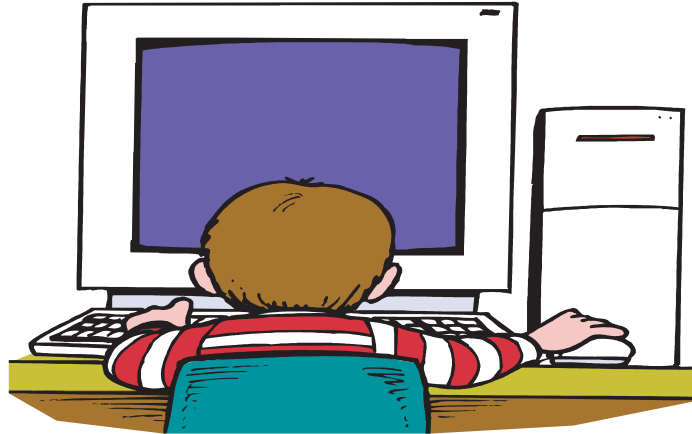


New in Youth Services!

Love to play on the Discovery Stations?



With Pharos, there is a new way to play your favorite games!



Your child will now need a Library Card in order to play on the Discovery Stations. If a computer is open, just sit down and use your child's Library Card to log on.



If your child does not have a Library Card, you can get them one at the Services Desk. Library Cards are free and applications are available in Youth Services or at the Services Desk. This application must be signed by a parent or guardian.



If you do not wish to get a Library Card for your child, you may use a parent or caregiver's Library Card to log on to the Discovery Station. Please be aware, however, that this will reduce your allotted time on the adult Internet stations.



If you do not wish to get your child a Library Card, another option is to get them a **Discovery Station Card**. This card looks just like a Library Card, and will allow your child to log on to the Discovery Stations, but not check out materials or use the Internet stations. If you are interested in getting your child a **Discovery Station Card**, please ask in Youth Services or at the Services Desk.



If you have any questions, please see a Youth Services staff member and we will be happy to help you!